


BiNTRAC[®]

RM200B BarnTools Interface



Table of Contents

Setup	3
Mounting	3
Wiring	4
BarnTools Gateway Setup	6
Status Lights	7
Test Button	7
Appendix A – Dimensions	8
HerdStar BinTrac® Warranty	9

 is a registered trademark of HerdStar, LLC.
Copyright © 2024 HerdStar®, LLC. All rights reserved.
Printed in the USA


1400 Madison Avenue Suite 504, Mankato, MN 56001
PH: 507-344-8005 FAX: 507-344-8009
www.herdstar.com

Setup

Open the unit and ensure that dip switch 6 is in the RM200B position (on). The other dip switches should be left at their default position.



Mounting

Mount the RM200B outdoors using the mounting holes on the top and bottom of the attached bracket (See **Appendix A – Dimensions**). The RM200B should be mounted within 100 feet of the BinTrac Indicator(s) it will be connected to.

IMPORTANT: Position each unit in a location where it will have the best line of sight with the BarnTools Gateway.



RM200B placement

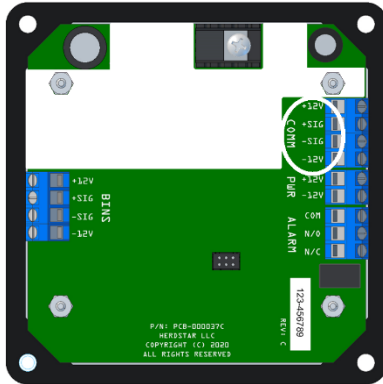
Wiring

Determine which BinTrac Indicator you have, either the BT200 (smaller, 5-digit display) or the BT260 (larger, 6-digit display) and wire the RM200B to the BinTrac Indicator using the information below. The relevant terminals on each unit are circled in white. The unit comes standard with a pre-wired 10 foot cable.

NOTE: The BinTrac Indicator must have software version **3.16** or later.

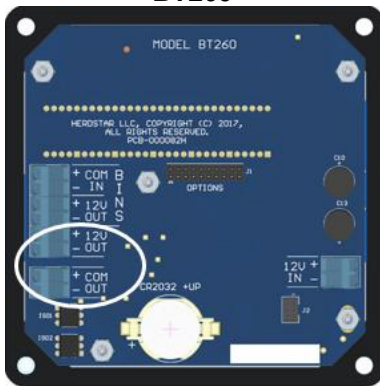
Standard/Master Wiring – This is used when the BinTrac Indicator is either a stand alone unit, or when it is the MASTER in a MASTER/REMOTE configuration.

BT200



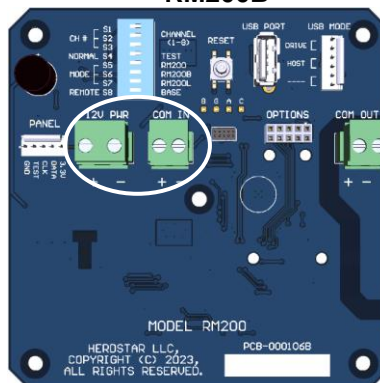
BinTrac BT200 (COMM)	Wire Color	RM200B (12V PWR and COM IN)
+12V	GREEN	12V PWR +
+SIG	WHITE	COM IN +
-SIG	RED	COM IN -
-12V	BLACK	12V PWR -

BT260



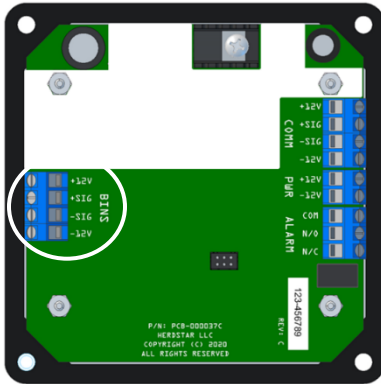
BinTrac BT260 (12V & COM OUT)	Wire Color	RM200B (12V PWR and COM IN)
+12V OUT	GREEN	12V PWR +
-12V OUT	BLACK	12V PWR -
COM OUT +	WHITE	COM IN +
COM OUT -	RED	COM IN -

RM200B



Remote Wiring - This is used when the BinTrac Indicator is the REMOTE in a MASTER/REMOTE configuration. The COM wires in the RM200B will need to be moved from the COM IN to the COM OUT

BT200



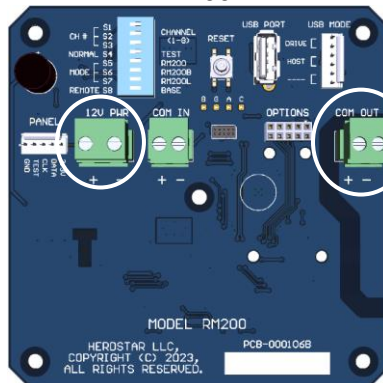
BinTrac BT200 (BINS)	Wire Color	RM200B (12V PWR and COM OUT)
+12V	GREEN	12V PWR +
+SIG	WHITE	COM OUT +
-SIG	RED	COM OUT -
-12V	BLACK	12V PWR -

BT260



BinTrac BT260 (BINS)	Wire Color	RM200B (12V PWR and COM OUT)
+COM IN	WHITE	COM OUT +
-COM IN	RED	COM OUT -
+12V OUT	GREEN	12V PWR +
-12V OUT	BLACK	12V PWR -

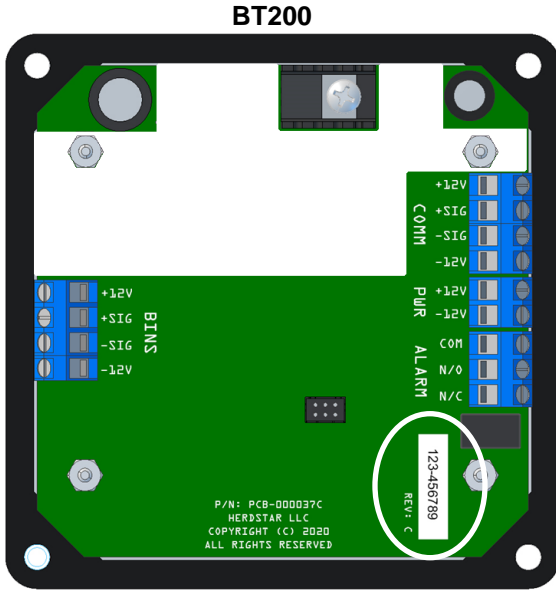
RM200B





BarnTools Gateway Setup

In order to pair to the BarnTools Gateway, you must first retrieve the **last 6 digits** of the serial number from inside the BinTrac Indicator. This can be found on the back side of the faceplate as shown below.



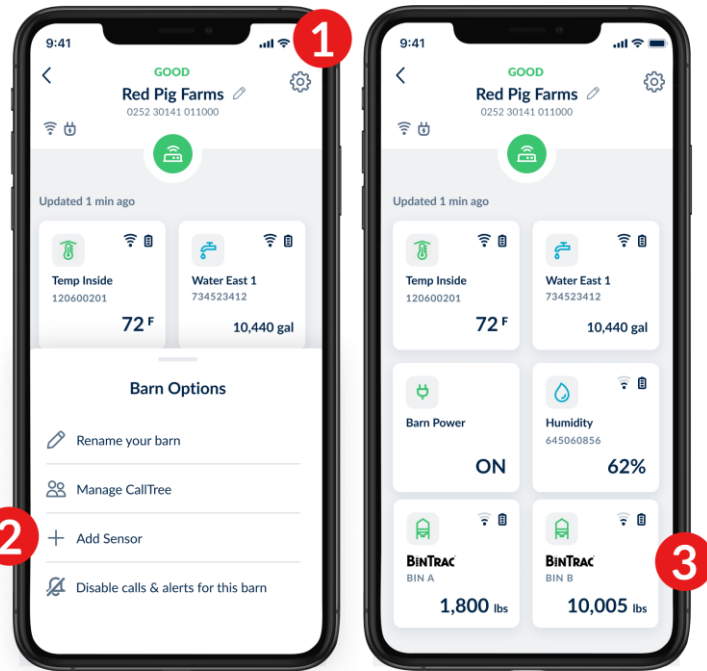
or



Open the gear icon in the top right of your screen and select "Add Sensor" then enter the **last 6 digits** of the serial number into the BarnTalk app. This process can also be done by contacting the BarnTools Support Team toll free at 855-580-0058, call/text at 515-272-5122, or by email at support@barntools.com with your BarnTalk Gateway serial number and the last 6 digits of your BinTrac indicator.

Note: The barcode will not be scannable. This number will need to be manually entered into the app.

Once paired, the BinTrac bins will take anywhere from 15-20 minutes to appear with a reading in the app. The BinTrac indicator is designed to communicate every 15 minutes with the BarnTalk Gateway. Your feed bins through BinTrac will appear in the BarnTalk app as indicated below.



Status Lights

The status lights on the RM200B indicate the following:

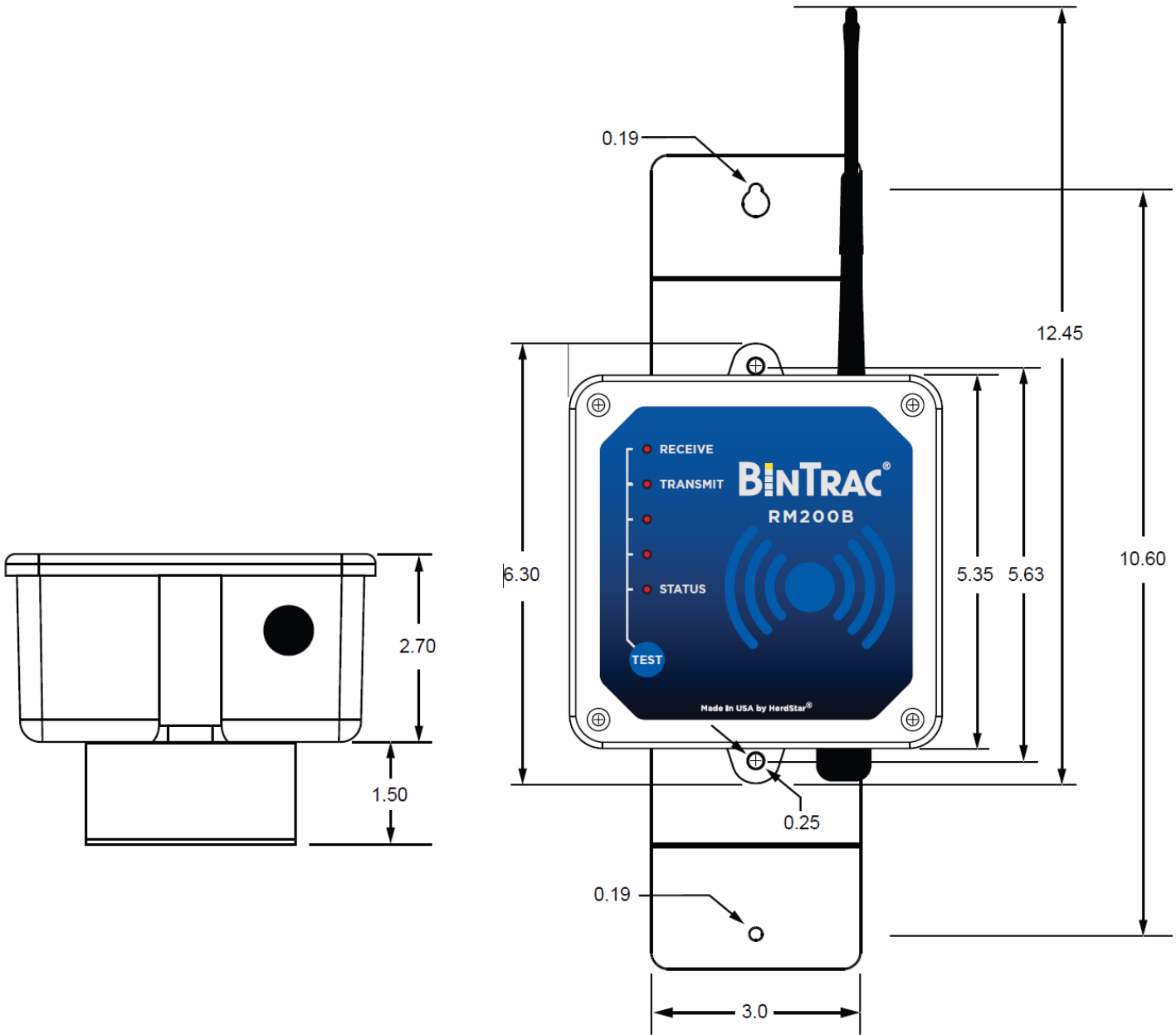
- Receive – Currently unused
- Transmit – Lights when the unit is transmitting data
- Status:

LED Condition	Description	Resolution
No Light	No power	Check power, verify proper wiring
Solid On	No communication	Verify proper wiring
Slow Blink	Communicating	Communicating properly

Test Button

Press TEST button to perform data transmission to BarnTools Gateway

Appendix A – Dimensions



HerdStar BinTrac® Warranty

HerdStar, LLC (“**HerdStar**”) warrants to original purchaser (“**Buyer**”) that goods manufactured solely by HerdStar, LLC (“**Products**”) will be free from defects in material or workmanship under normal and intended use and service for a period of one year from delivery date of the Products. Used and/or refurbished parts sold shall carry a 90-day warranty on material and workmanship. All warranty claims must be submitted within ten (10) days of discovery of defects within the warranty period, or shall be deemed waived. Furthermore, HerdStar, LLC warrants the load cell (“Load cell” is defined as the s-shaped component and any cabling and connectors) against lightning damage for 12 months or the term of any extended warranty.

In the event of a defect in any Products constituting a breach of the warranty provided herein, HerdStar, LLC will at its option either (i) repair or replace such Product free of charge, or (ii) in lieu of repair or replacement, refund to Buyer the original purchase price less the reasonable value of Buyer’s use of the Products. HerdStar, LLC shall furnish to Buyer instructions for the disposition of the defective goods. HerdStar, LLC shall have the option of requiring the return of the defective goods, transportation prepaid, and proof that the goods were not used, installed or altered or subject to misuse or abuse to establish the claim. No goods shall be returned to HerdStar, LLC without its prior consent. The acceptance of any goods returned to HerdStar, LLC shall not be deemed an admission that the goods are defective or in breach of any warranty, and if HerdStar, LLC determines that the goods are not defective they may be returned to Buyer at Buyer’s expense. This warranty sets forth Buyer’s sole and exclusive remedies for any defect in the goods. The rights and obligation under this warranty may not be assigned or delegated to a third party by Buyer without the prior written permission of HerdStar, LLC. Neither Buyer nor any other person may modify or expand the warranty provided herein, waive any of the limitations, or make any different or additional warranties with respect to the Products. Any statements to the contrary are hereby rendered null and void unless expressly agreed to in writing by an authorized officer of HerdStar, LLC.

EXCEPT AS STATED IN ABOVE, HERDSTAR, LLC DOES NOT MAKE ANY WARRANTY AS TO THE GOODS OR SERVICES AND, IN PARTICULAR, DOES NOT MAKE ANY WARRANTY OF MERCHANTABILITY OR FITNESS FOR ANY PARTICULAR PURPOSE, AND BUYER IS SOLELY RESPONSIBLE FOR DETERMINING THE PROPER APPLICATION AND USE OF THE GOODS.

HerdStar, LLC makes no representation or warranty that individual animals, or any given population of animals, will utilize any of HerdStar, LLC’s goods in the manner for which the goods were intended or designated. Any component parts that are not manufactured by HerdStar, LLC, such as electrical motors and controls, are excluded from any warrant by HerdStar, LLC, although such parts may be covered by separate warranties of the respective manufacturers. This warranty set forth above does not apply if all components of a system are not supplied by HerdStar, LLC or if the goods are not purchased from and installed by an authorized distributor or company warehouse, or installed and operated in accordance with HerdStar LLC’s specifications and instructions.

HERDSTAR, LLC SHALL NOT HAVE ANY TORT LIABILITY TO BUYER OR ANY OTHER PERSON WITH RESPECT TO ANY OF THE GOODS OR SERVICES AND SHALL NOT BE LIABLE FOR CONSEQUENTIAL, INCIDENTAL, SPECIAL, EXEMPLARY, INDIRECT OR PUNITIVE DAMAGES ARISING FROM ANY PRODUCT DEFECT, DELAY, NONDELIVERY, RECALL OR OTHER BREACH. BUYER SHALL NOT HAVE ANY RIGHT OF REJECTION OR OF REVOCATION OF ACCEPTANCE OF THE GOODS.